

DO NOT SCALE FROM THIS DRAWING - CHECK ALL DIMENSIONS ON SITE.
 THIS DRAWING IS A DESIGN DRAWING ONLY. INFORMATION SHOWN MAY NEED TO BE SUPPLEMENTED OR FURTHER DRAWINGS PRODUCED FOR CONSTRUCTION.
 ANY INACCURACIES WITH THIS DRAWING MUST BE REPORTED TO POPE CONSULTING LTD AT THE EARLIEST OPPORTUNITY.

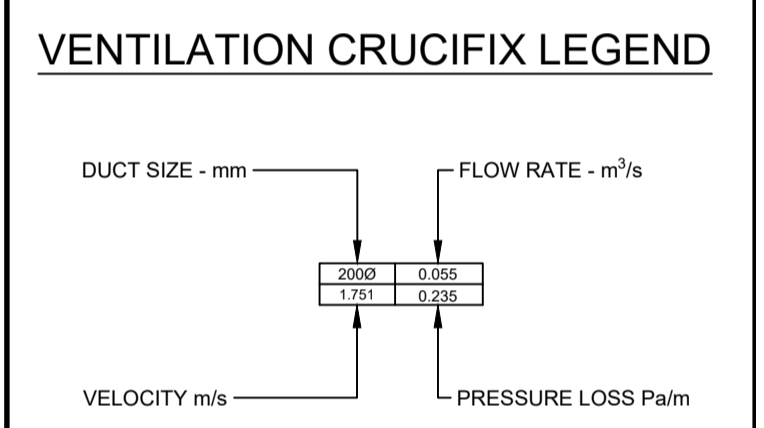
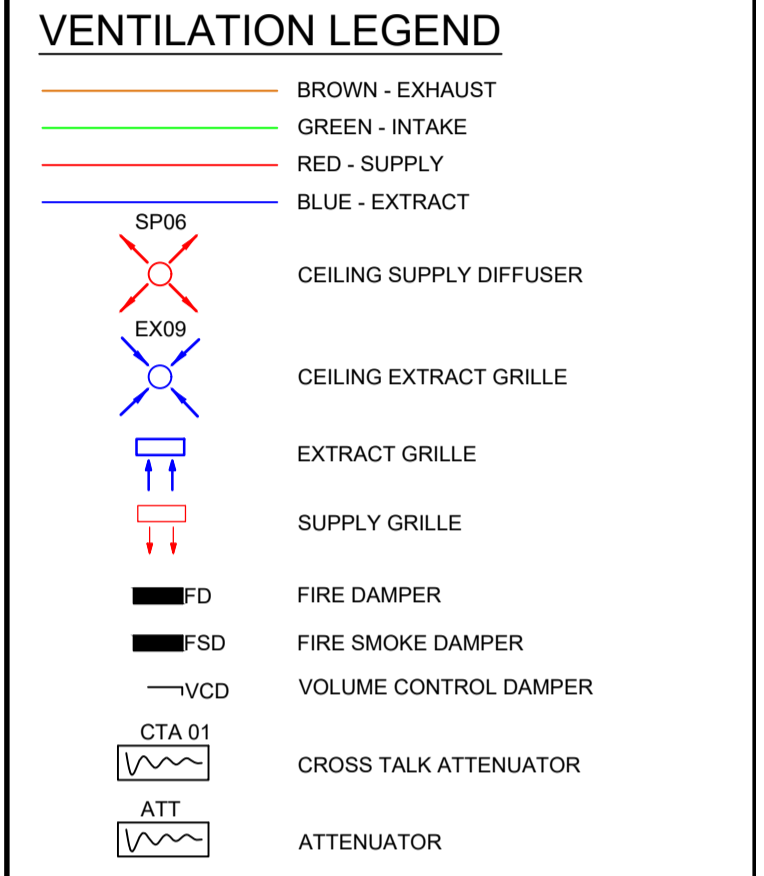
SAFETY, HEALTH AND ENVIRONMENT INFORMATION
 OUR ASSESSMENT IS BASED ON THE USE OF EXPERIENCED AND COMPETENT CONTRACTOR(S) WORKING TO AN APPROVED METHOD STATEMENT. UNUSUAL HAZARDS/RISKS ARE LISTED BELOW OR THE STATEMENT "NO SIGNIFICANT RISK" IS INCLUDED.

CONSTRUCTION
 1. Residential Staircase Congestion

OPERATION
 1. No Significant Risk

MAINTENANCE
 1. No Significant Risk

(FUTURE) DISMANTLING/DEMOLITION
 1. INFORMATION BASED ON RECORD DRAWINGS CANNOT BE VALIDATED FOR ACCURACY - SURVEY REQUIRED PRIOR TO WORKS



T2	CLIENT REVIEW UPDATES	NC	20.12.24
T1	TENDER ISSUE	NC	03.12.24
No.		CHK	DATE

ISSUE: **TENDER**

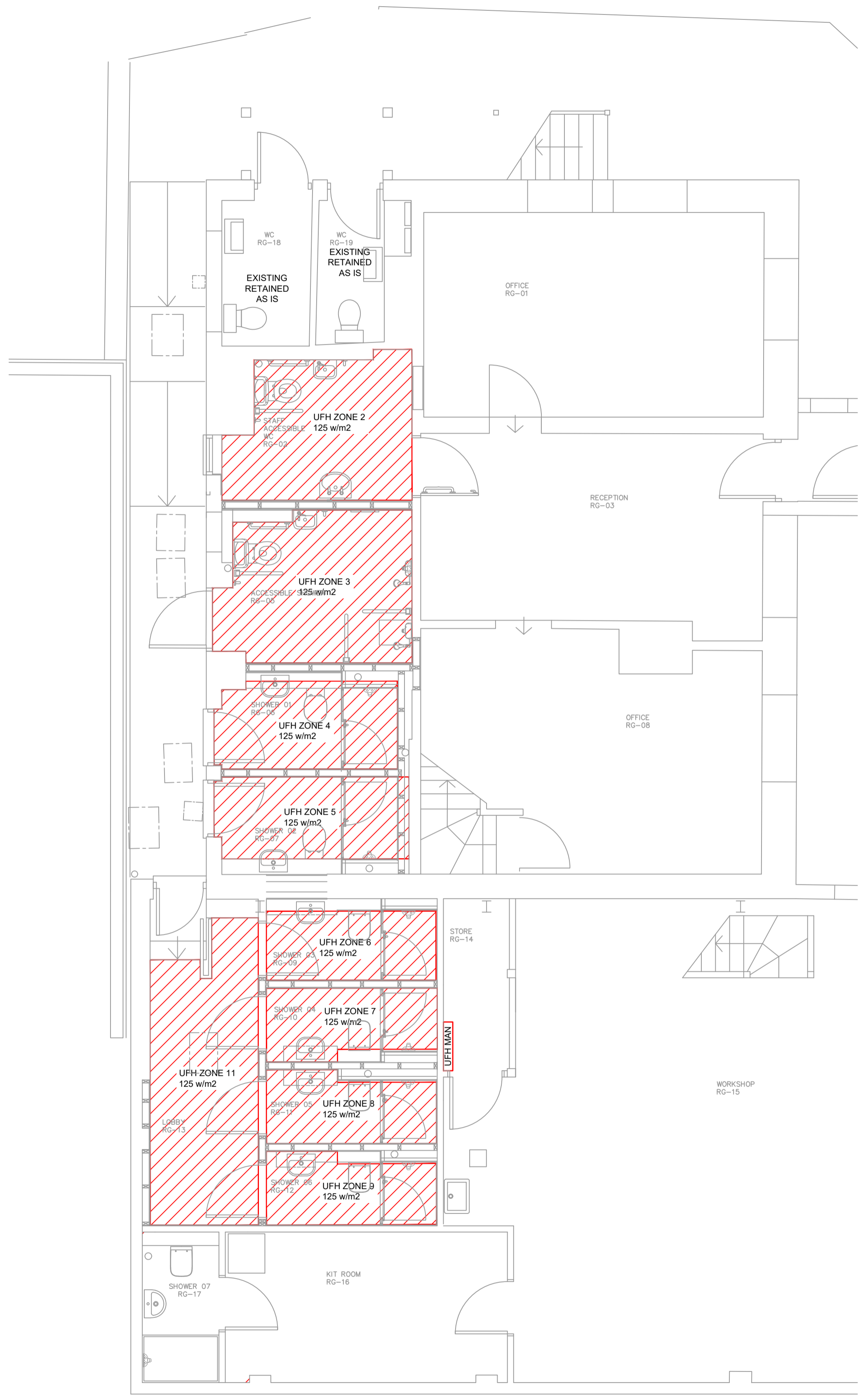


CLIENT: **CHICHESTER HARBOUR CONSERVANCY**

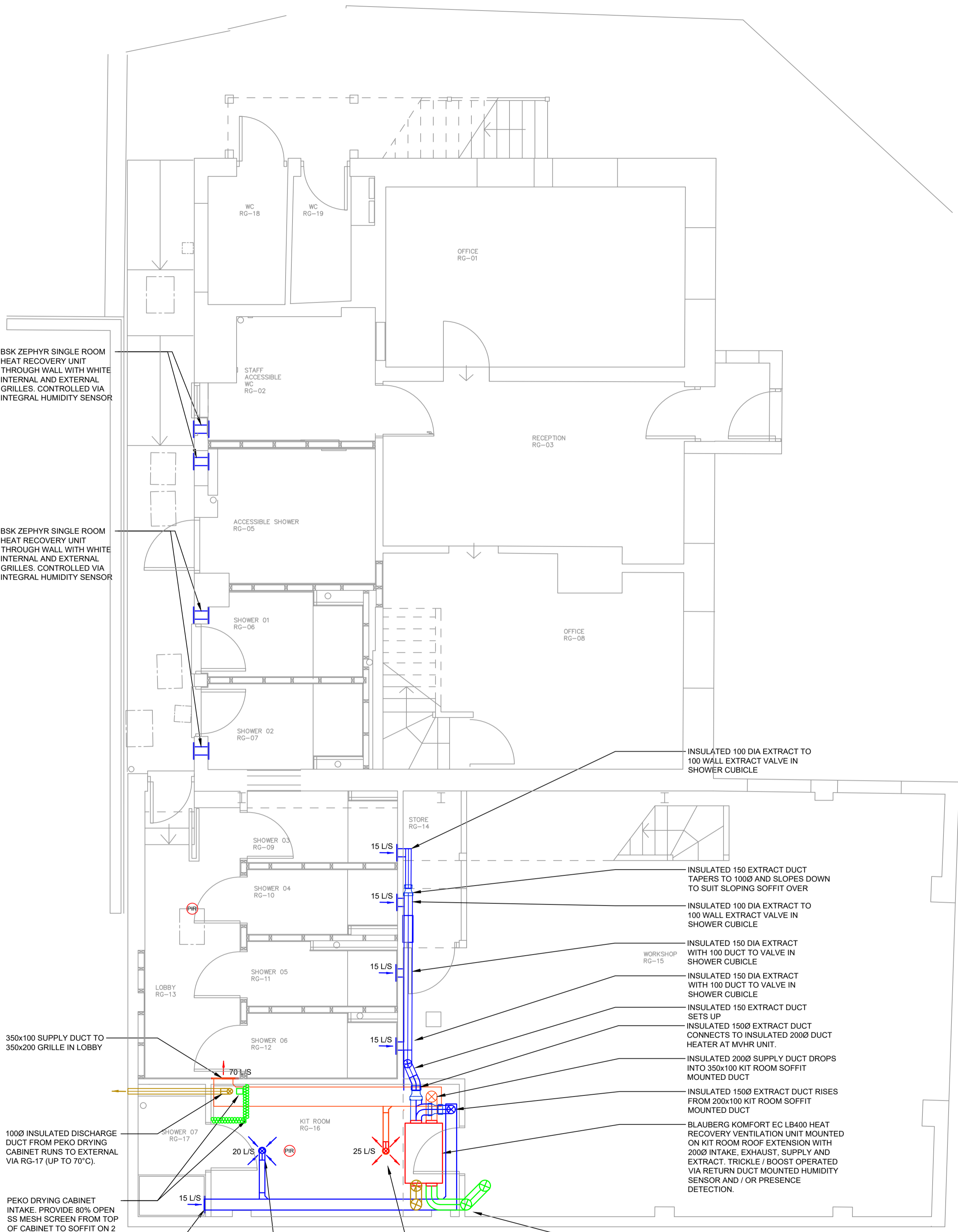
PROJECT: **HARBOUR CONSERVANCY ITCHE NOR**

DRAWING TITLE: **UNDERFLOOR HEATING AND VENTILATION LAYOUTS**

DATE: 03.12.24	DESIGNED: JC	CHECKED: NC	SCALE: 1:50 @ A1
PROJECT NO. 5453	DRAWING NO. M001	REV: T2	



UNDERFLOOR HEATING



VENTILATION

BSK ZEPHYR SINGLE ROOM HEAT RECOVERY UNIT THROUGH WALL WITH WHITE INTERNAL AND EXTERNAL GRILLES, CONTROLLED VIA INTEGRAL HUMIDITY SENSOR

350x100 SUPPLY DUCT TO 350x200 GRILLE IN LOBBY

1000 INSULATED DISCHARGE DUCT FROM PEKO DRYING CABINET RUNS TO EXTERNAL VIA RG-17 (UP TO 70°C).

PEKO DRYING CABINET INTAKE. PROVIDE 80% OPEN SS MESH SCREEN FROM TOP OF CABINET TO SOFFIT ON 2 SIDES TO PREVENT LOOSE MATERIALS BEING STORED ON CABINET ROOF.

200x100 EXTRACT TO VALVE IN SHOWER CUBICLE WALL

INSULATED 100 DIA EXTRACT TO 100 WALL EXTRACT VALVE IN SHOWER CUBICLE

INSULATED 150 DIA EXTRACT TAPERS TO 1000 AND SLOPES DOWN TO SUIT SLOPING SOFFIT OVER

INSULATED 150 DIA EXTRACT WITH 100 DUCT TO VALVE IN SHOWER CUBICLE

INSULATED 150 DIA EXTRACT WITH 100 DUCT TO VALVE IN SHOWER CUBICLE

INSULATED 1500 EXTRACT DUCT SETS UP

INSULATED 1500 EXTRACT DUCT CONNECTS TO INSULATED 2000 DUCT HEATER AT MVHR UNIT.

INSULATED 2000 SUPPLY DUCT DROPS INTO 350x100 KIT ROOM SOFFIT MOUNTED DUCT

INSULATED 1500 EXTRACT DUCT RISES FROM 200x100 KIT ROOM SOFFIT MOUNTED DUCT

BLAUBERG KOMFORT EC LB400 HEAT RECOVERY VENTILATION UNIT MOUNTED ON KIT ROOM ROOF EXTENSION WITH 2000 INTAKE, EXHAUST, SUPPLY AND EXTRACT. TRICKLE / BOOST OPERATED VIA RETURN DUCT MOUNTED HUMIDITY SENSOR AND / OR PRESENCE DETECTION.

100x100 BRANCH DUCT TO VALVE AT HL IN KIT ROOM

200 DIA INSULATED INTAKE AND INSULATED EXHAUST DUCTS RISE TIGHT TO WALL, THEN SET AWAY FROM PERIMETER AND THROUGH ROOF TO CIRCULAR WEATHER COWL ABOVE ROOFLINE